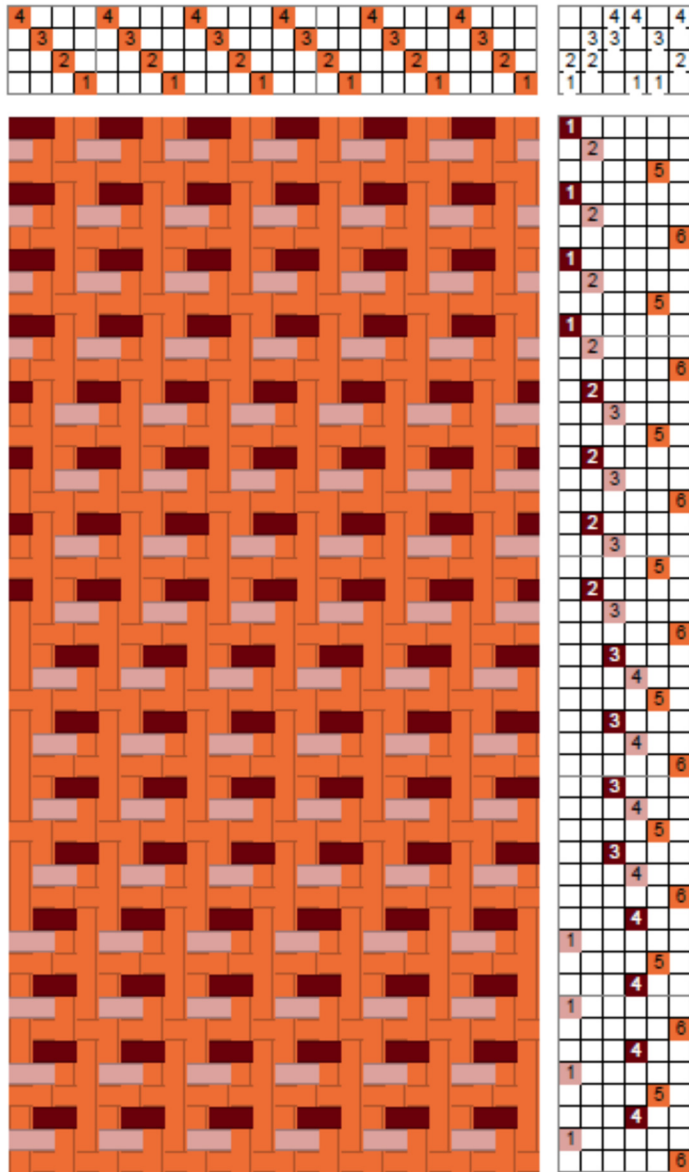


# Echo Treadling Method



Echo is a treadling method (see entry) that uses two different color pattern wefts and a ground tabby. It is generally applied to twills. The “tromp as writ” treadling of the twill is staggered as shown in the drawdown on the left; each two shot sequence is repeated using the alternate tabbies, hence the name echo. That is, a pick using one color (here brown) is thrown with shafts 1 & 2 raised, followed by a pick using another color (beige), with shafts 2 & 3 raised, followed by the 1 & 3 tabby; the two pattern picks are repeated followed by the alternate tabby, 2 & 4. The six shots sequence is repeated before moving to the next treadling sequence.

The example here is an echo treadling on a straight twill with 48

shots for a complete repeat.

The tabby weft may be the same size as the warp but a smaller one emphasizes the pattern wefts.

Sewing thread was used as the tabby on the fabric on the right.

